



**Piloter** Series Color Doppler Ultrasound  
A Smart Tablet Ultrasound System

**wisonic**  
Your needs we care

# Guide The Future



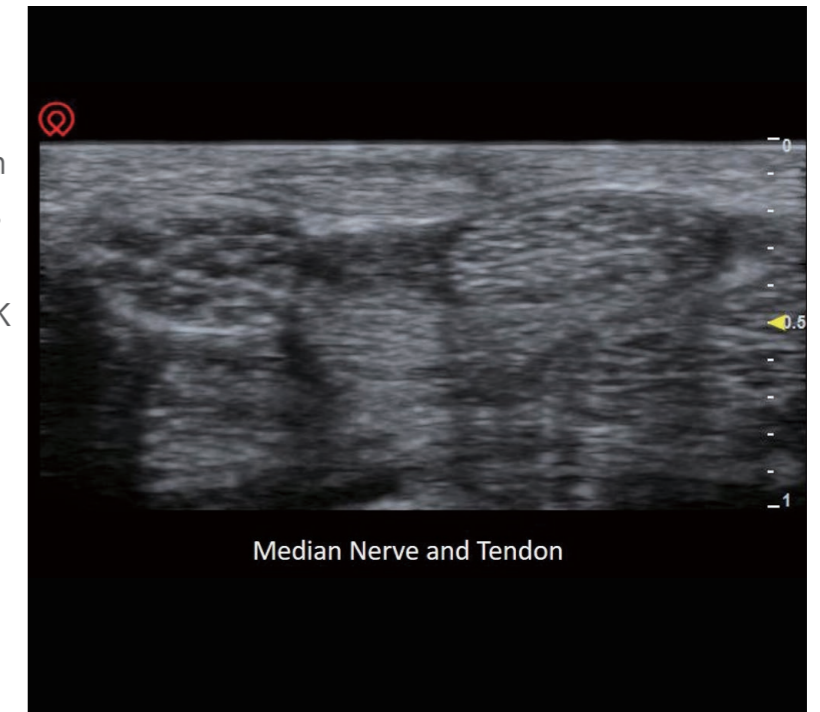
Piloter is a specialized ultrasound unit, dedicated in each subdivision segment. With its extremely lightweight case, smart design and built-in customized workflow, Piloter provides more efficient and convenient experience for musculoskeletal, pain management, physical therapy and vascular.

## ✦ Prominent Imaging

Precision medical has become a public knowledge, while visualization is the essential means to realize accurate medical treatment. Piloter focuses on solving the user's core demands, solving the problem of visualization breakthrough in image display and pain treatment, escorting precision medical all the time.

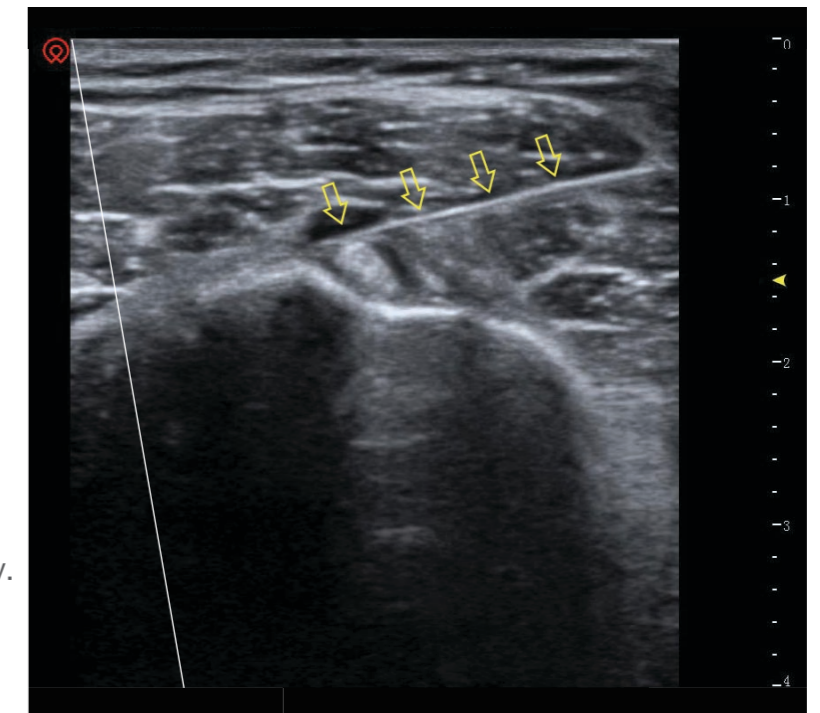
### Best in Detail Tissue Imaging

Piloter was built on Holo platform, which has 64-beam processing and achieves up to 5000 frames per second. Along with image fine tuning according to MSK and pain management request, Navi is able to provide not only the whole field best in detail image quality but also highlight the display of bones, muscles and nerves.



### wiNeedle Intelligent Needle Visualization Technology

The most challenging work during procedure is always distinguishing the needle from tissue. Navi answers this by providing a very intelligent wiNeedle feature. wiNeedle automatically recognize the needle, then steer ultrasound beam perpendicular to needle, and enhance the needle display.



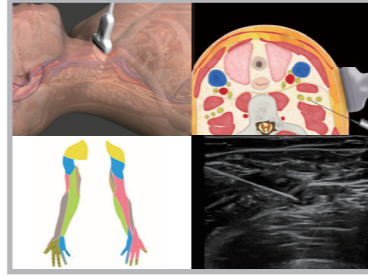


# Genius Design

Piloter, in an extremely lightweight box, equipped with a smart cart, can be anywhere with you at any time, and make sure every qualified exam and procedure is safe and efficient.

## wiLearn Education Center

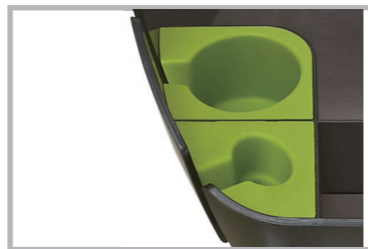
Developed for MSK, pain management and physical therapy, wiLearn provides side by side education interface and material.



2kg main system, extremely lightweight



Built-in tray and dedicated probe holder



Smart base



13.3-inch touch screen, horizontal or vertical display, height adjustable.



Built-in transducer adapter



Table supporter





# 🌀 Versatile Application, Best-in Class Image Quality

A wide range of transducers covers full range of general applications, from large patient to pediatrics. An innovative middle line design along with project probe direction indicator, provide users best experience and accuracy.



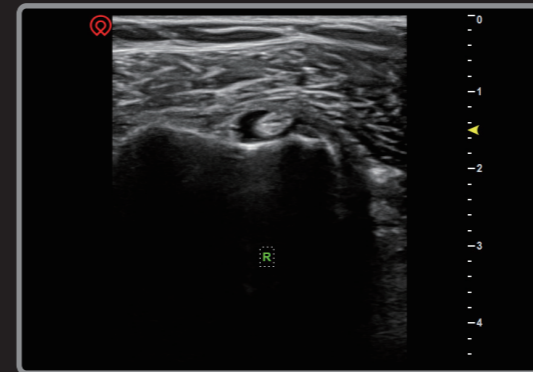
## Probe Button

Smart-design button on both side of probe, let user readily interact with system via gloves-on hands.

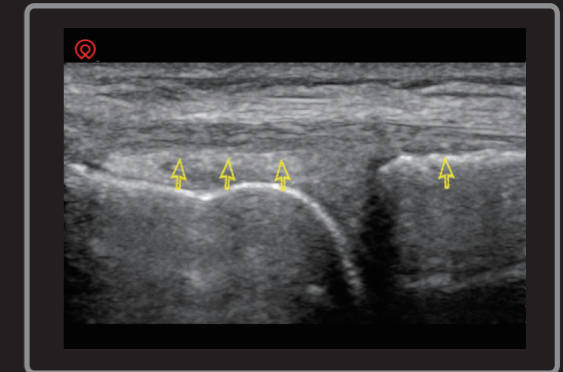


## Hockey Stick Probe

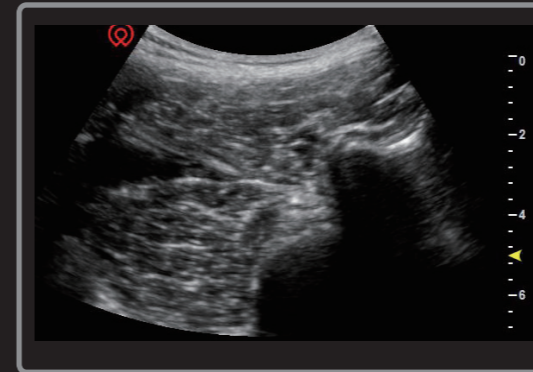
A dedicated probe for small joint and superficial, with very high frequency and lightweight design, it is a perfect tool for excellent detail imaging and able to be used in a limited space.



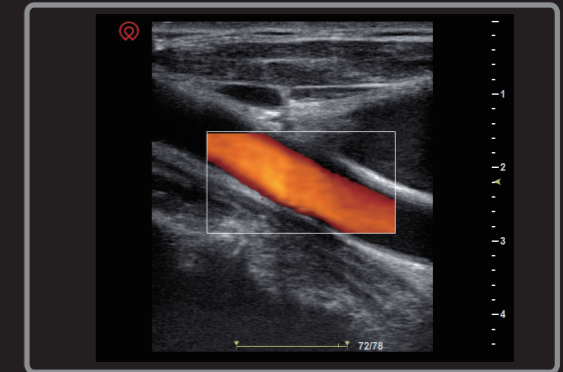
Biceps Tendon



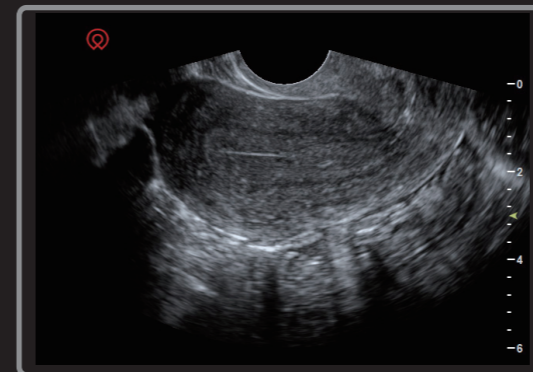
Knee Joint



Spine



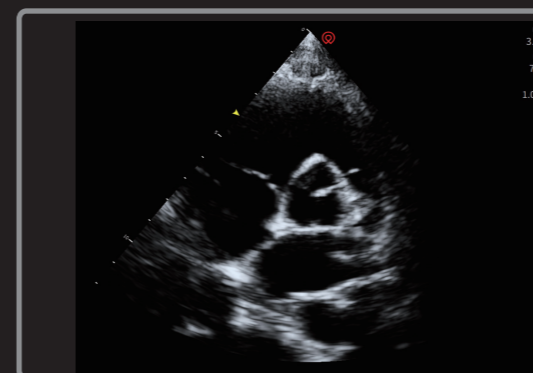
Lower Extremity Artery



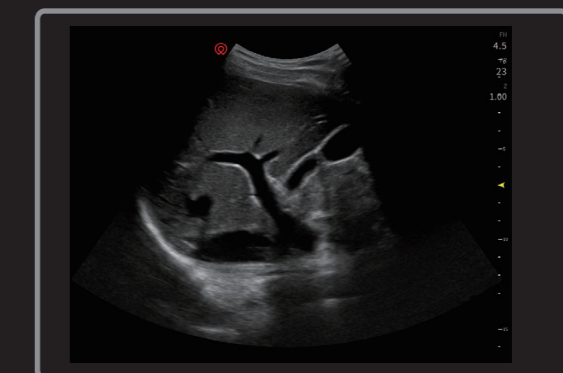
Uterus



Fetus



Aortic Valve



Liver



## Shenzhen Wisonic Medical Technology Co., Ltd.

**Address:** 5th Floor, No.6 Building, Pingshan Technology Park,  
Taoyuan Street, Nanshan District, Shenzhen, China

**Tel:**+86-755-86007788

**Fax:**+86-755-86007799

**Email:** info@wisonic.cn

www.wisonic.cn

