

VINNO⁵
Ready to Go



VINNO 

VINNO Technology (Suzhou) Co., Ltd.

5F, A Building, No.27 Xinfu Rd, Suzhou Industrial Park, 215123, China

Tel: +86 512 62873806

Fax: +86 512 62873801

Email: vinno@vinno.com

Website: www.vinno.com

VINNO reserves the rights to revise the technical specifications if needed.

VINNO
VISION IN INNOVATION



In the face of increasingly complex environment and changing clinical needs, VINNO 5 allows you ready to go whenever you need, with its superlight weight (3.5KG), extremely simplified workflow, delivering various clinical solutions.



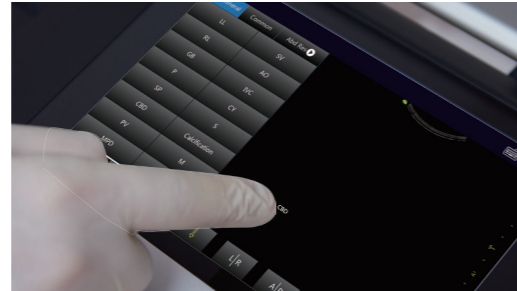
Simplicity

Responsive touch screen, streamlined workflow and customizable configurations maximize your practice efficiency.

- Intuitive Touch Operation

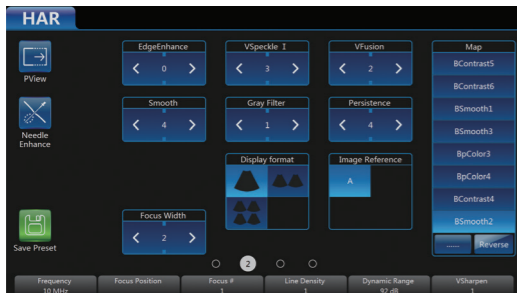


Super-sensitive touchscreen allows smooth operation even with gloves on

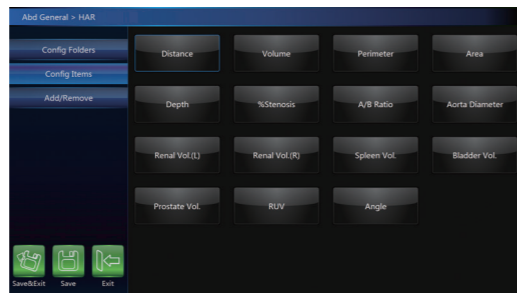


Fingertip-conductive touch operation

- Customizable Configuration

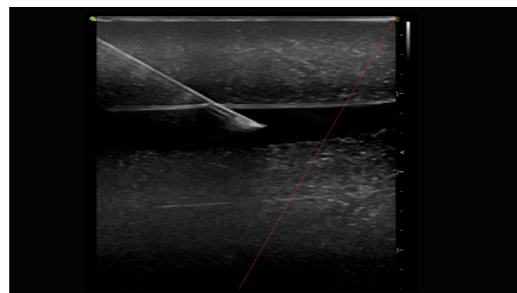
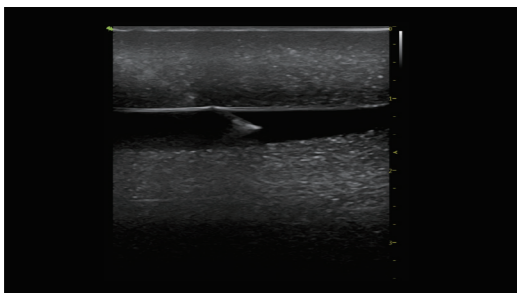


Self-defined preset



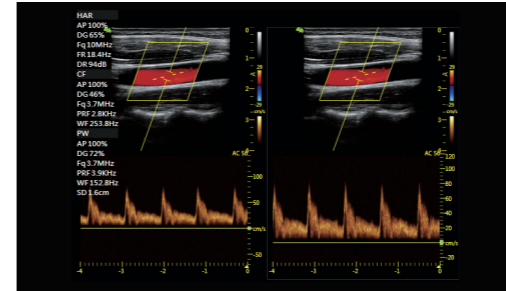
Self-defined measurement item sequence

- Needle Enhancement



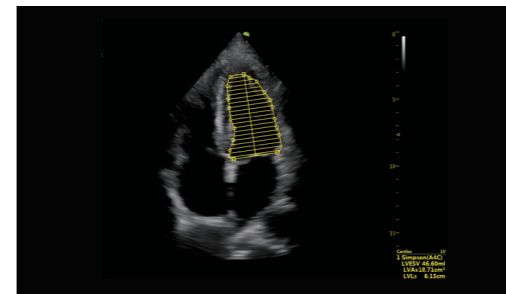
Significantly enhances the visualization of the needle, while minimizing disruption to the surrounding tissue.

- Auto Optimization



One-key auto optimization automatically adjusts gain, PRF, base-line at one click.

- Auto Measurement



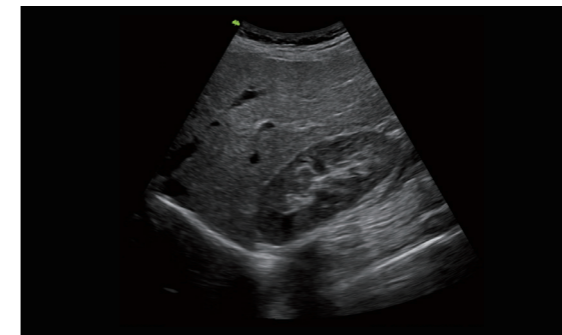
System can automatically recognize the target and calculate the results avoiding repetitive click.



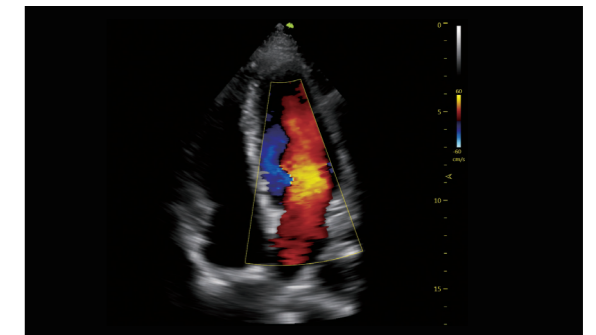


Variety

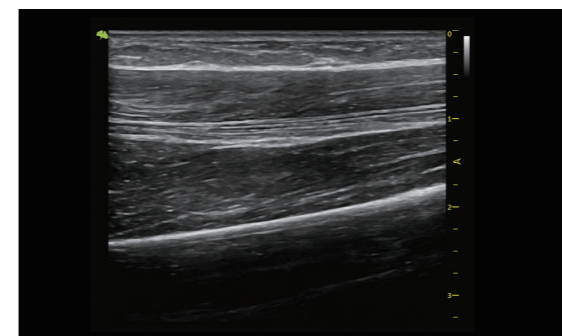
The superior image quality, simplified workflow and light weight of VINNO 5 provides diagnostic confidence for emergency medicine, anesthesia, pain management, critical care and musculoskeletal examinations. A full suite of transducers with wide bandwidth can cover various applications with different requirements.



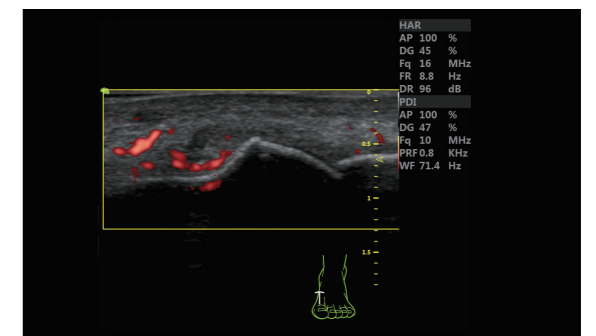
In complex emergency environment, VINNO 5 performs with its fast boot up time, extreme portability, built-in battery and WIFI or Bluetooth communication as an ideal partner for you.



With rich cardiac function analysis software such as MAM, Auto EF, VINNO 5 can support cardiac diagnosis at bedside for critically ill patients in fast pace.



VINNO 5 supports a variety of linear probes with wide frequency bandwidth which deliver superior image quality from superficial to deep tissue. With needle enhancement, which makes VINNO 5 an ideal system for nerve block and pain management.



Up to 23Mhz high frequency linear transducer, highly sensitive power Doppler and biopsy guidance feature ensure you the accuracy of the interventional operation in sports medicine, orthopedics and rheumatology.

Excellent in OB/GYN Application

- A highly sensitive touchscreen and simple 4D interface deliver a smoother workflow and easy your daily practice.
- A full range of OB/GYN functions including MCut, Freeview, HQ, Auto OB Measurement, 3D Auto Follicle for complete analysis.



Innovative Design



Battery pack

It can be the backup battery inside the system supports 2-hour working time for each pack.



Battery indicator

The light indicator will be illuminated after the battery is set in place.



4 probe holders



2 or 3-probe extension (optional)



Physical keyboard bracket (optional)



Video printer bracket